

# MP-FF/FS Series

Fan safety is MPFANS

**Strong Blade & Soft Wire**

[www.mpfans.com.cn](http://www.mpfans.com.cn)

## Company profile



- \* Advantage of HVLS
- \* High Quality
- \* Multi Application
- \* Best Service



Move-Point Intelligent Equipment (Guangzhou) Co., Ltd was established in 2018. Covers an area of more than 6,000 square meters. Our company integrates research and development, manufacturing, and sales.

We only focus on one thing: the Large HVLS(High Volume Low Speed) Fans, also called Large industrial ceiling fans, Big Ceiling Fan. We adopt German Lenze Motor and PMSM as driving devices. Aero-grade aluminum magnesium alloy fan blades as the main parts. Moreover, we have many exclusive patented technologies on safety components.

All the safety components are produced with automatic machines which ensure our products in stable quality. The fans' size can be as per your demand. All our products will be strictly qualified before packing. This kind of big fan can be widely used for various large spaces. Such as the Production workshop, Logistics warehouse, Exhibition Hall, Sports Center, Leisure tourism places big farms, etc.

Welcome to consult and visit our company. Move-Point High Quality & Best Service.



**木鏢智能科技(广州)有限公司**  
MOVEPOINT INTELLIGENT TECHNOLOGY GUANGZHOU CO., LTD





## Move-Point HVLS Industrial Fan

### Average energy saving up to 87%

The following datas are collected by a large amount of small fan energy consumption.

And a long time to test and compare HVLS industrial fan to draw a conclusion.

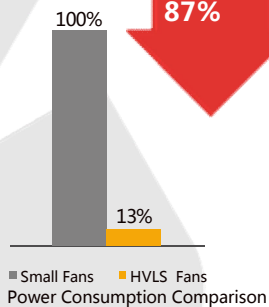
## Advantage of HVLS Industrial Fan

### 1 Much more energy saving than the small fans

A 7.3m diameter HVLS fan from Move-Point is approximately equal to the area covered by more than 45 pcs 0.75m small fans. For example, in a 9000 square meter plant, in order to achieve comprehensive coverage, about 300 small fans are needed, but only 9 HVLS industrial energy-saving fans are needed. According to the use of 4 years, 8 months in a year, 10 hours a day, about a total of 10,000 hours of operation, power consumption of HVLS industrial fan is 135000KW.h, while the small fan need 1080000KW.h. It can save 944500kw.h, energy saving rate up to 87%!

Dia (m)	Cover Area (m <sup>2</sup> )	Air Flow (m <sup>3</sup> /min)	Qty Fans (SET)	Power (KW)	Working Time (h)	Power Consumption (KW.H)	Total Cost (RMB)	Saved (RMB)	Life Time (years)
7.3	1000	13800	9	1.5	10000	135000	135000	¥945000	10
0.75	30	300	300	0.3	10000	1080000	1080000	0	2
Comparison	Free Maintenance	Comfortability	Easy to operate	Easy to Manage					
HVLS Industrial Fan	✓	✓	✓	✓					
Small Strong Fan	×	×	×	×					

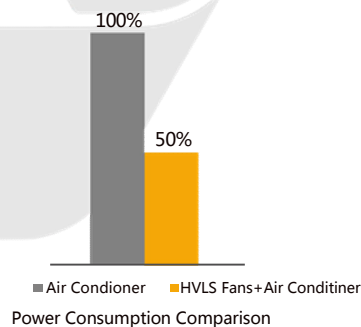
Energy Saving 87%



### 2 Combine to use with air conditioner, save energy more than 50%

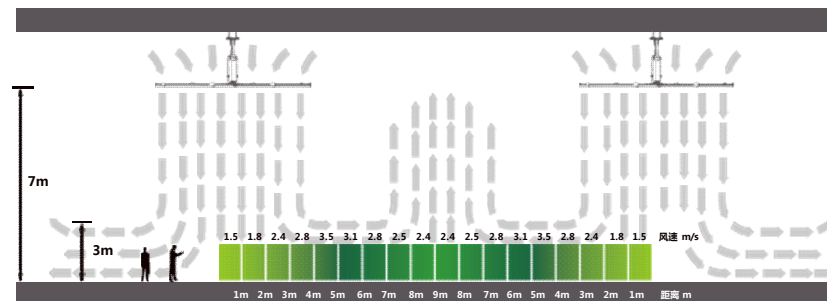
HVLS industrial fan, can simulate natural wind, balance human body temperature, bring you a full range of comfortable experience.

In Winter and summer seasons, when it is combined to use with HVLS fans, you can easily gather the top of the building air and ground air evenly mixed, eliminating cold and hot stratification. And reduce the air conditioning unit switching time, reduce the energy consumption of enterprises.



### 3 Three-dimensional natural wind to meet the cooling demand.

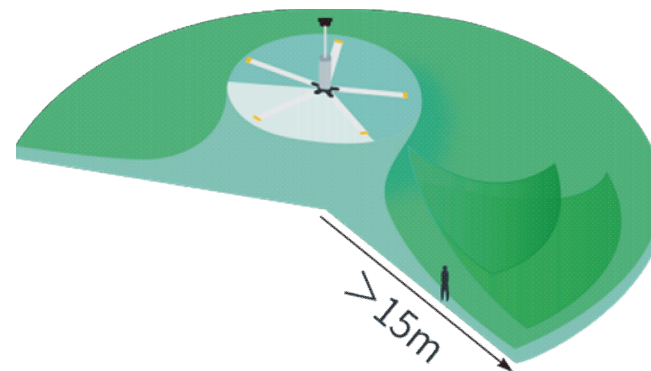
The energy-saving fan will simulate the natural breeze, all-round three-dimensional air supply, bring 5-8°C cooling experience to the human body, and prevent health diseases caused by high speed direct blowing, such as fan disease. The wind speed can be adjusted at any time within the range of 1m/ S-5m/ s, which is convenient to meet any application.



### 4 Large space coverage area

At the same time, the energy-saving fan has the characteristics of low speed, low power, large coverage area, etc., and the wood dart reduces the resistance to a small degree through the design of the airfoil blade, ensuring that the electric energy is converted into air kinetic energy with high efficiency at low speed.

In addition, the air flow structure of the wood dart is also very different from that of the ordinary small fan. When the ordinary small fan operates, the active air flow is only limited to the diameter range of the fan. In the operation process of the wood dart energy-saving fan, the top air is first pushed vertically to the ground, forming a 1-3 meter high air layer on the ground, forming a large coverage area far beyond the diameter of the fan.





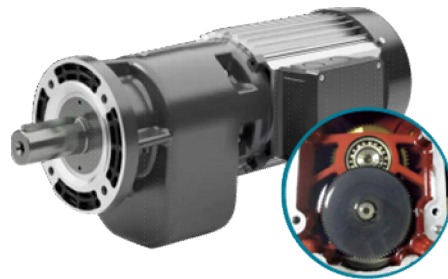
MP-FS/MP-FF Series

## Product advantage

### 1 The world's top motor technology The most reliable escort

Move-Point MP-FS/MP-FF series equipped with German imported brand motor, in the field of motor deceleration all-in-one machine with its outstanding stability has long been famous, compared with other brands of motor:

1. Low backlash assembly process and grinding process, lower noise
2. Strengthen the bearing frame structure, trapezoidal axle structure, increase the oil seal, strengthen the fuselage structure, higher safety factor
3. IE2 high energy efficiency motor, 5-10% energy saving than IE1
4. Long service life, consistent quality



### 2 The most complex chassis manufacturing process, the most careful quality assurance

The chassis is made of 1600T hot forging +CNC lathe machining +CNC precision machining technology to ensure the best mechanical properties of the chassis; After CNC machining, the precision tolerance of the chassis is controlled at 100μm to ensure the accurate dynamic balance of the bottom plate.



### 3 HVLS The best electrical configuration in the industry

HVLS industry's best electrical configuration scheme: through the Swiss SGS company's authoritative EMC certification, CCC certification and anti-leakage test, effectively shield electromagnetic interference. Protection class IP55, pass the UL, EMC, LVD, RoHs certification.



### 4 Low Noise

The large fan can adapt to more scenes, so we also have strict control over the noise of the equipment operation, and the overall noise standard of the whole series of products is below 40dB. We reduce noise standards in three ways:

1. the design of the overall structure of the product, reduce the operating resonance
2. choose high-quality motor and control system
3. The linear design of the fan blade and tail fin reduces the wind noise generated by eddy currents



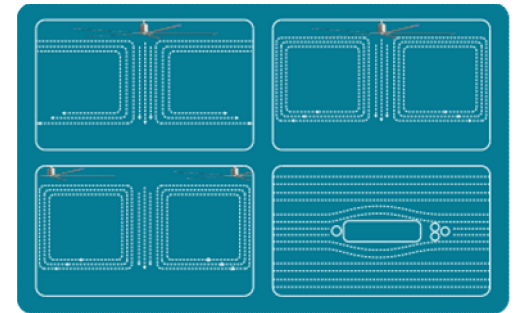
### 5 Safe and Durable blade technology prevents breakage and drops

Move Point MP-FS/MP-FF series adopts special high-strength aviation magnesium aluminum alloy, aerodynamic blade profile. Move-Point Technology's new patented fan blade unique design: up to four sets of reinforcement support system inside the fan blade. The flexible connection design of wood dart's patented fan blade and petiole makes the fan blade system a combination of rigidity and flexibility, and prevents safety incidents caused by fan blade fall from the root.



### 6 Ultra-large coverage area

The use of large diameter fan blade rotation to promote a large amount of air to the ground, the ground formed a certain height of the airflow layer along the horizontal movement around, to promote the air circulation of the whole space, its low speed, low energy consumption, high air volume and cover a wide area.



MP-FS/MP-FF Series

# Move-Point Patent Technology



\* Technological innovation

\* Prevent accidents from happening at the root

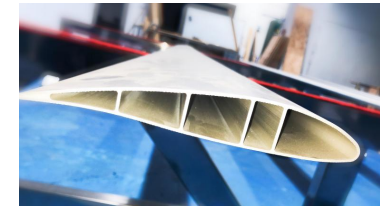


MP-FS/MP-FF Series

## Core security component analysis Zero tolerance for large fan safety hazards

### 1 Reinforce the tendon

The inner cavity of the fan blade is equipped with up to four reinforcing rib systems that support the whole fan blade according to different stress points, which greatly improves the overall strength of the fan blade.



### 2 Strengthen the chassis

Compared with castings, hot forging of chassis can improve the structure and mechanical properties of metal after forging. After the casting structure is deformed by the forging method, due to the deformation and recrystallization of the metal, the original coarse dendrites and columnar grains are changed into a fine grain and uniform size equiaxial recrystallization structure, which makes the original segregation, porosity, slag inclusion and other compaction and welding in the aluminum parts, and the structure becomes more compact, improving the plastic and mechanical properties of the metal.



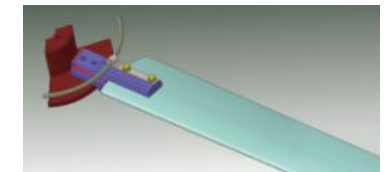
### 3 Aircraft blade plug-in

Move-Point Technology adopts the world's leading helicopter blade external clip design concept, the external clip plug-in is not affected by the inner cavity area of the fan blade. The external clip-on plug-in is divided into two parts as a double safety design, and the effective cross-sectional area of the design is 2083mm<sup>2</sup>. The thickness is about 2.5 times that of the plug-in. Effectively control all kinds of problems caused by the stress concentration of blades and bolts.



### 4 Both strong and soft

Hard is easy to fold, soft is tough. Wood darts technology combined with aluminum magnesium alloy metal characteristics, specialized innovation of fan blade and chassis connection protection, the use of cable + steel ring combination system, rigid and flexible, safe is assured.



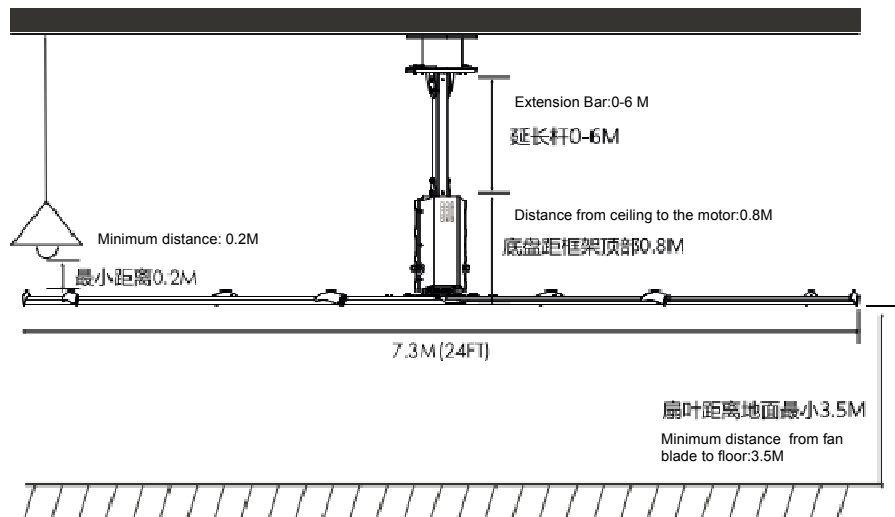
**MP-FF/FS Series**

# Installation and technical parameters

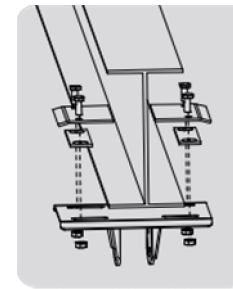
## 1 Installation Condition

Our company has an experienced team of electrical, mechanical and construction engineers. The team members conduct stress analysis for different building structures, evaluate installation conditions, and provide customers with the most reasonable installation solutions. At the same time, the installation process is also extremely important, so in the process of operation, the wooden dart team resolutely abide by the strict operating norms, strengthen the control of each installation link, and let you rest assured with excellent professional technology!

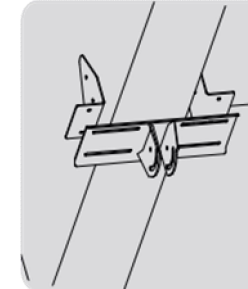
- A** Installation plan is customized for every project.
- B** Lift truck installation, well equipped.
- C** Level, height, balance debugging, rich experience.
- D** Balanced test, smooth operation
- E** Fasteners are torque standard for optimal tightening
- F** Installation process, simple and scientific
- G** Building structure: H-shaped steel, I-steel, steel mixed square beam, ball column etc.
- H** The total height of the building must be greater than 3.5M
- I** The minimum safe distance between fan blades and obstacles is 0.2M
- J** Input power supply: 380V/220V



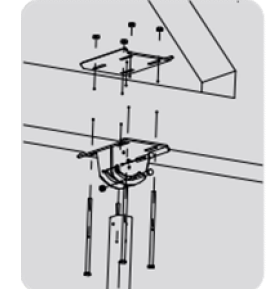
## 2 Type of mounting structure



I beam structure



Brick-concrete structure



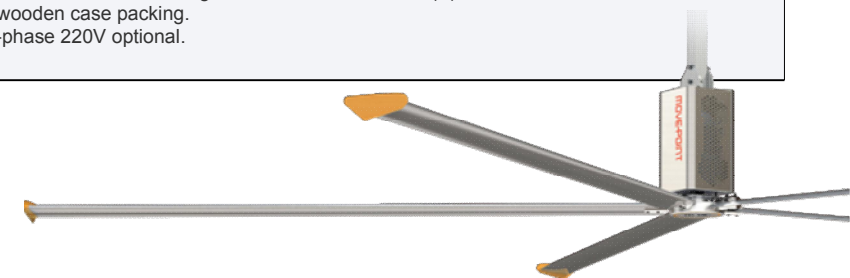
Shelving structure

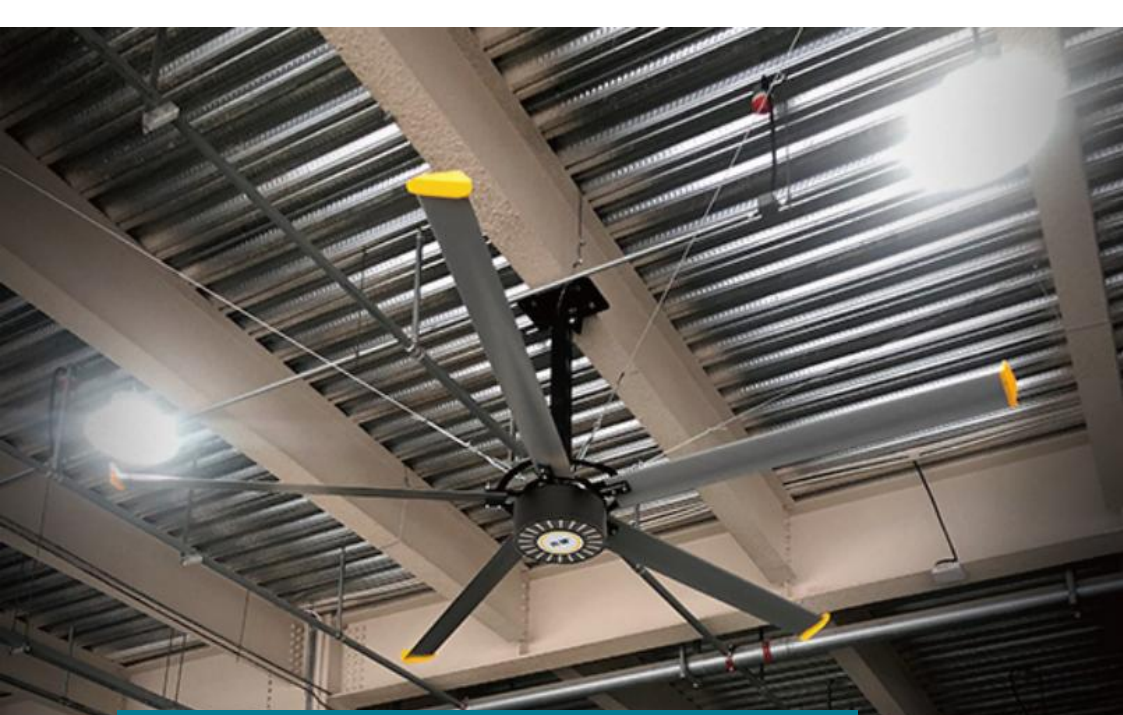
Note: The above is a common structure, other structures such as: composite structure, bolt ball grid structure, goose plate structure, etc., the company has mature installation programs to match.

## 3 MP-FX Series Technical Data

MP-FF/FS Series							
No.	Model	Size	Air Volume	Power	Max Speed	Fan Weight	Full load current
1	HVLS-MPFF-2473	24ft(7.3m)	15060m <sup>3</sup> /min	1.5kW	10-56rpm	112kg	5.7A/220V
2	HVLS-MPFF-2061	20ft (6.1m)	13100m <sup>3</sup> /min	1.5kW	10-60rpm	98kg	5.7A/220V
3	HVLS-MPFF-1855	18ft (5.5m)	12100m <sup>3</sup> /min	1.5KW	10-65rpm	72kg	4.2A/220V
4	HVLS-MPFF-1649	16ft (4.9m)	11300m <sup>3</sup> /min	1.5KW	10-75rpm	57kg	4.2A/220V

Remark:  
 1, Weight Calculation: Product weight does not include the control box, top connection components, etc.  
 2, Size: The above listed product size is standard, other specifications can be customized.  
 3, Noise: 1M away from the motor, electromagnetic noise is below 40dB(A).  
 4, Packing: Standard wooden case packing.  
 5, Input power: single-phase 220V optional.

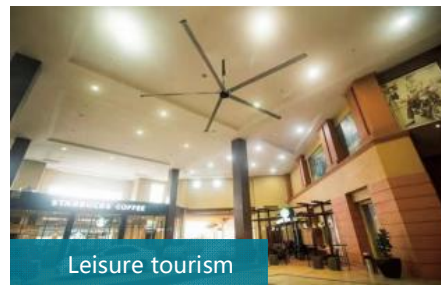




MP-FF/FS Series

## Application field

- \* Commercial public place
- \* Manufacturing industry
- \* Logistics warehousing
- \* Sports Center
- \* Leisure tourism



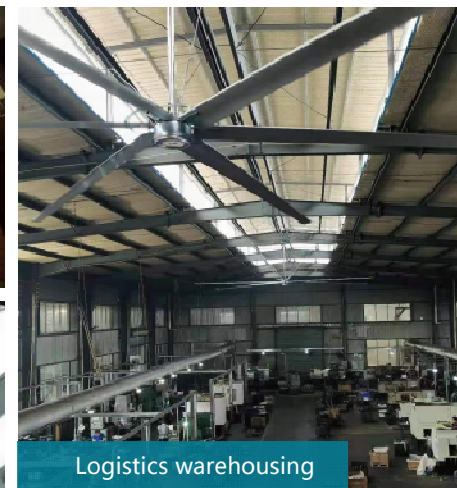
Leisure tourism



Commercial public place



Manufacturing industry



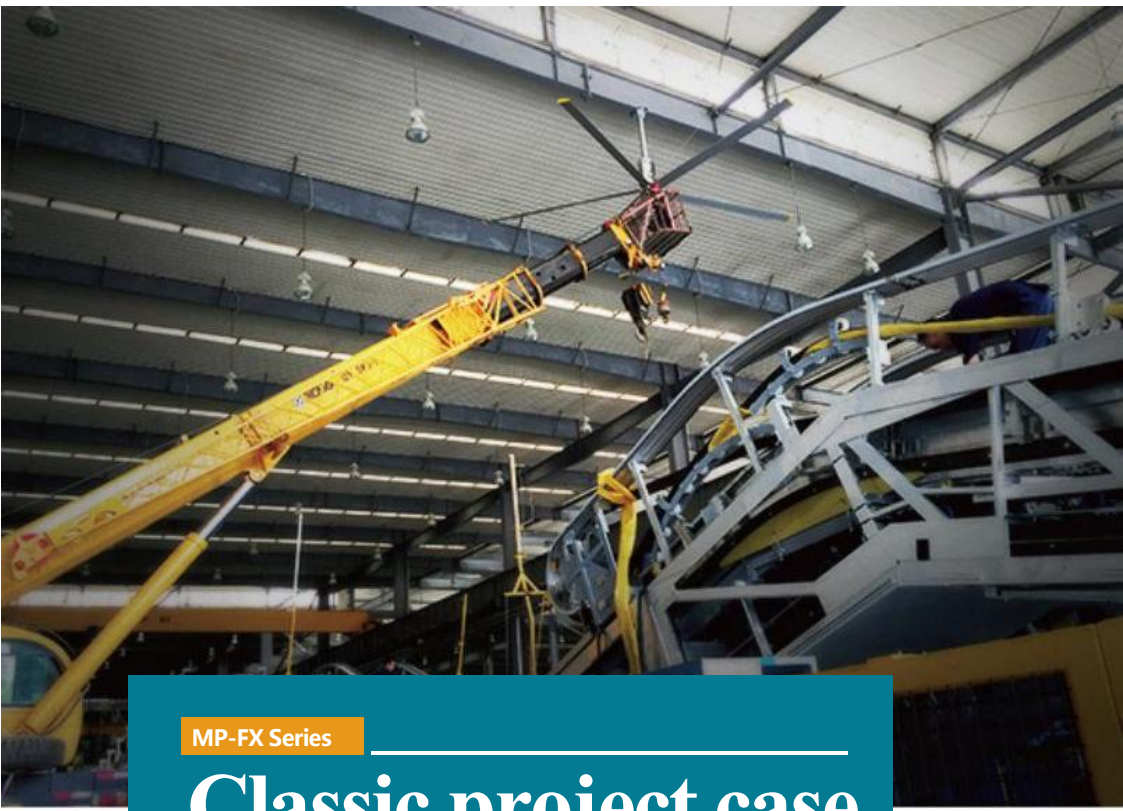
Logistics warehousing



Logistics warehousing



Sports Center

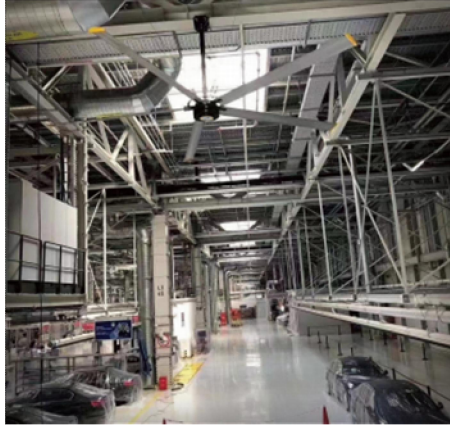


MP-FX Series

---

# Classic project case

---





# Quality Assurance

Our confidence in our products comes from the quality of our products. Wood dart passed CE, TUV certification and the State Quality Supervision Bureau of the strict Certification, strict production, quality assurance management system and international quality of product parts and raw materials, to ensure the product of more than 15 years of service life.

Move-Point technology has an efficient and professional after-sales service team to provide users with perfect after-sales service.

Move-Point Technology provides users with:

- 1) Long time quality assurance of the whole machine
- 2) Provide product liability insurance, underwritten by PICC
- 3) Full third-party certification of products

## Move-Point Intelligent Equipment (Guangzhou) Co., Ltd

Contact Person: **Ivana**

Tel/WhatsApp/Wechat: **0086 138 2229 9748**

Email: [ivana@mpfans.com.cn](mailto:ivana@mpfans.com.cn)

[www.mpfans.com.cn](http://www.mpfans.com.cn)

Add: No.188, Xinzhou Road, Xizhou Industrial zone, Xintang Town, Guangzhou, Guangdong Province.



Wechat



Ivana  
WhatsApp 联系人



Whatsapp

# Service Guarantee

After-sales service is a very important guarantee for the stable operation of equipment. Because of this, Move-Point technology has always provided users with high-quality products and perfect after-sales service, at present, Move-Point technology has set up sales and after-sales service centers in five regions of the country, to ensure that the first time to provide users with thoughtful, fast, high-quality and comprehensive after-sales service, so that users can buy with peace of mind and worry.

Move-Point technology to provide 24 hours a day service and technical support products in the warranty period encountered problems, the after-sales department will respond within 24 hours due to natural disasters man-made damage and warranty outside the problem, the after-sales department will still respond within 24 hours, and provide technical advice and support, in order to cooperate with customers to solve the problem as soon as possible. If users need other support services, we will try our best to cooperate with you.

## MAIN SALES NETWORK

